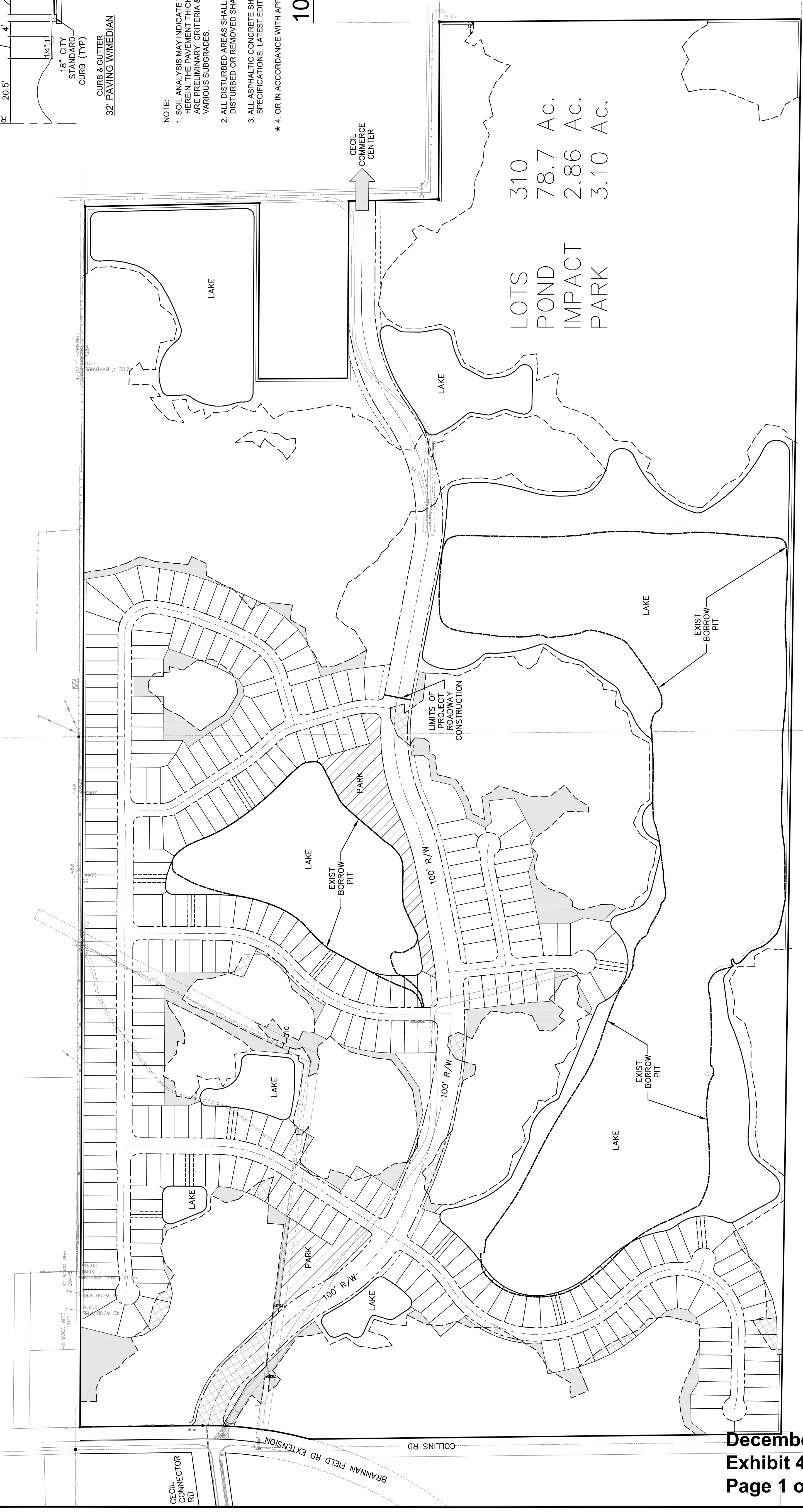


**NOTE:**

1. SOIL ANALYSIS MAY INDICATE THE NEED FOR THICKER BASE COURSES THAN THOSE SHOWN HEREIN. THE PAVEMENT THICKNESS SHOWN HEREIN ARE NOT INTENDED TO BE ABSOLUTE, BUT ARE PRELIMINARY. CRITERIA & MAY BE MODIFIED TO ACCOMMODATE THE BEARING CAPACITIES OF VARIOUS SUBGRADES.
2. ALL DISTURBED AREAS SHALL BE SEEDED & MULCHED. ALL AREAS WHERE SOD HAS BEEN DISTURBED OR REMOVED SHALL BE RESODDED TO SATISFACTION OF OWNER.
3. ALL ASPHALTIC CONCRETE SHALL MEET THE REQUIREMENTS OF SECTION 331, F.D.O.T. STANDARD SPECIFICATIONS, LATEST EDITION.

\* 4. OR IN ACCORDANCE WITH APPROVED CONSTRUCTION PLANS.

### 100' RIGHT-OF-WAY (N.T.S.)



Sheet No. 1 of 1  
**CON-9**  
DWG. NO.

VINCENT J. DUNN ENGINEER NO. 39462  
DAVID M. TAYLOR ENGINEER NO. 44164  
CERTIFICATE OF AUTHORIZATION NO. 27189

**COPPER RIDGE**  
FOR:  
**D.R. HORTON, INC. - JACKSONVILLE**  
DUVAL COUNTY, FLORIDA  
CONCEPTUAL PLAN

**Dunn & Associates, Inc.**  
CIVIL ENGINEERS / LAND PLANNERS  
8375 Dix Ellis Trail, Suite 102 Jacksonville, Florida 32256  
Phone: (904)363-8916 Fax: (904)363-8917  
www.dunneng.com

DESIGNED BY:	MR
DRAWN BY:	MR
CHECKED BY:	VJD
SCALE:	1" = 200'
DATE:	DECEMBER, 2017
PROJ. NO.:	1610-459

NO.	DATE	REVISIONS DESCRIPTION	BY:
1	12/27/17	ADD 100' R/W	VJD